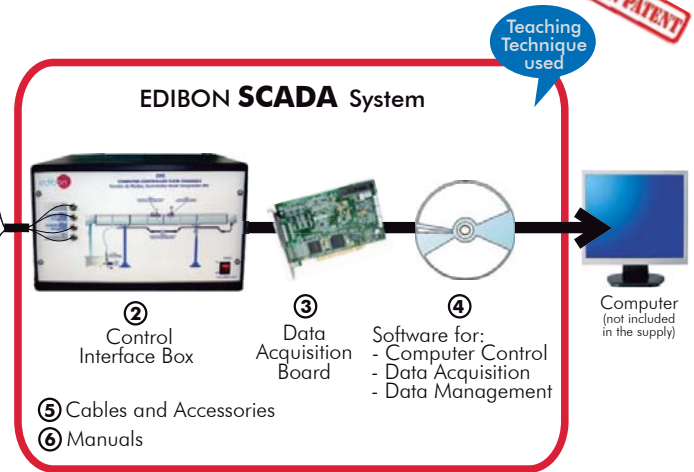


**CFC**

**EDIBON PATENT**



\*Minimum supply always includes: 1 + 2 + 3 + 4 + 5 + 6  
(Computer not included in the supply)

- ① Unit: CFC. Computer Controlled Flow Channels (section: 80 x 300 mm)  
Available Versions:  
- CFC80/2. Computer Controlled Flow Channel (section: 80 x 300 mm), length: 2.5 m.  
- CFC80/5. Computer Controlled Flow Channel (section: 80 x 300 mm), length: 5 m.

Key features:

- ▶ **Advanced Real-Time SCADA.**
- ▶ **Open Control + Multicontrol + Real-Time Control.**
- ▶ **Specialized EDIBON Control Software based on Labview.**
- ▶ **National Instruments Data Acquisition board (250 KS/s , kilo samples per second).**
- ▶ **Calibration exercises, which are included, teach the user how to calibrate a sensor and the importance of checking the accuracy of the sensors before taking measurements.**
- ▶ **Projector and/or electronic whiteboard compatibility allows the unit to be explained and demonstrated to an entire class at one time.**
- ▶ **Capable of doing applied research, real industrial simulation, training courses, etc.**
- ▶ **Remote operation and control by the user and remote control for EDIBON technical support, are always included.**
- ▶ **Totally safe, utilizing 4 safety systems (Mechanical, Electrical, Electronic & Software).**
- ▶ **Designed and manufactured under several quality standards.**
- ▶ **Optional CAL software helps the user perform calculations and comprehend the results.**
- ▶ **This unit has been designed for future expansion and integration. A common expansion is the EDIBON Scada-Net (ESN) System which enables multiple students to simultaneously operate many units in a network.**

**OPEN CONTROL  
+  
MULTICONTROL  
+  
REAL TIME CONTROL**

**www.edibon.com**  
Products  
Products range  
Units  
8.-Fluid Mechanics & Aerodynamics

For more information about Key Features, click here:



ISO 9000: Quality Management  
(for Design, Manufacturing,  
Commercialization and After-sales service)



European Union Certificate  
(total safety)



Certificates ISO 14000 and  
ECO-Management and Audit Scheme  
(environmental management)



Worlddidac Quality Charter  
Certificate  
(Worlddidac Member)

## GENERAL DESCRIPTION

Channel of rectangular section with transparent walls through which water flows. Water is taken from the storage tank by means of a hydraulic pump, with speed regulation, and, by the pipe, it is driven to the inlet tank, where there is a soothing of flow. After that, the water flows through the channel that discharges in the reception tank. Finally it comes back to the storage tank, completing the closed circuit.

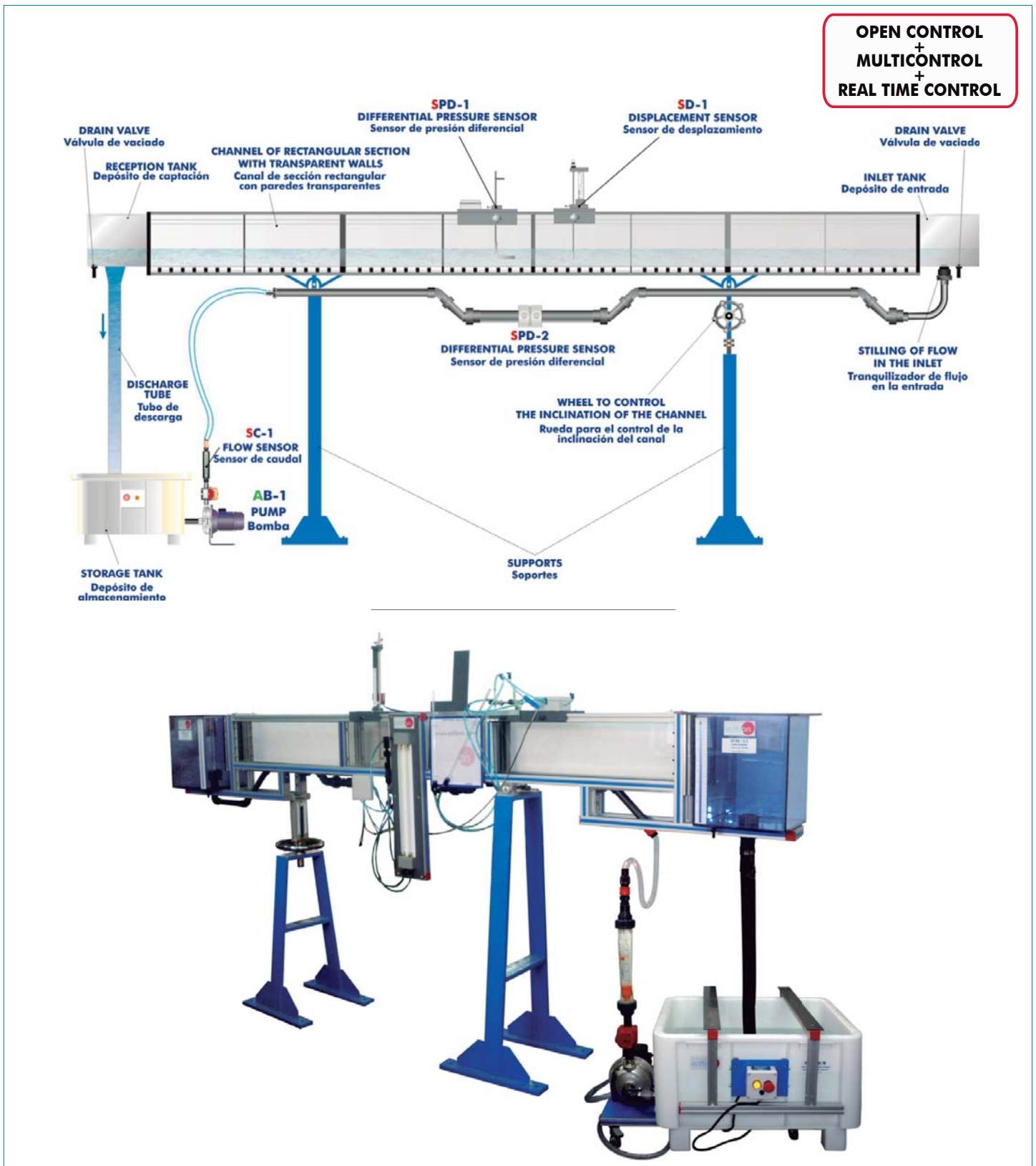
The unit includes the instrumentation and the suitable sensors (flow, pressure, etc) to control and to measure the most representative parameters.

The channel is assembled on two supports, with a system to control the inclination of the channel.

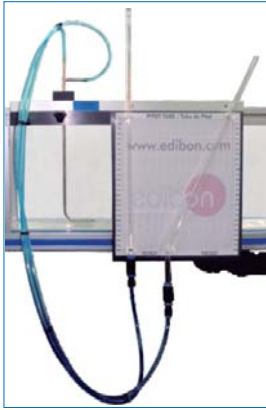
There is a wide range of available accessories.

This Computer Controlled Unit is supplied with the EDIBON Computer Control System (SCADA), and includes: The unit itself + a Control Interface Box + a Data Acquisition Board + Computer Control and Data Acquisition Software Packages, for controlling the process and all parameters involved in the process.

## PROCESS DIAGRAM AND UNIT ELEMENTS ALLOCATION



## Available Accessories



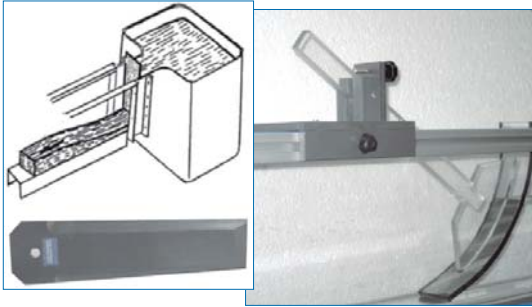
CFTPC. Pitot tube and manometer board



CFRMC. Level gauge for measurement of the water height (hook and point gauge)



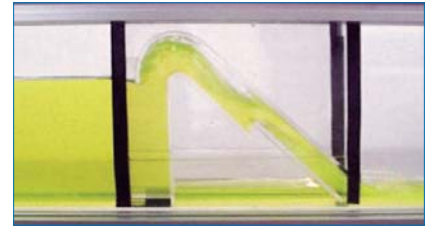
CFVDGC. Broad and thin crested weirs



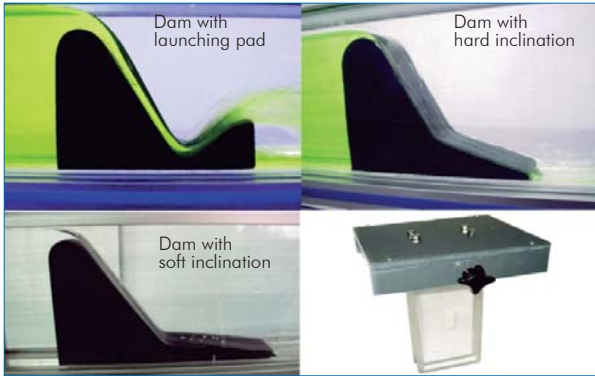
CFCVRC. Vertical flat gate and radial gate



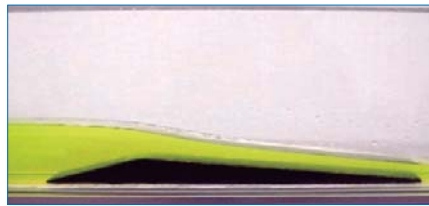
CFSDLC. Syphon spillway



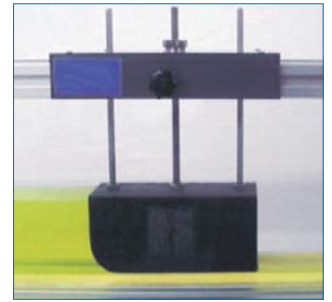
CFSDSC. Air regulated syphon



CFPVPC. Dams spillway and flow splitters (3 different models of dams)



CFVCC. Crump weir



CFCAC. Culvert fitting



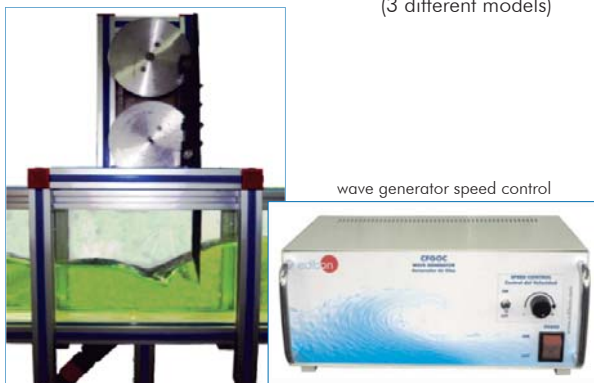
CFVENC. Venturi flume



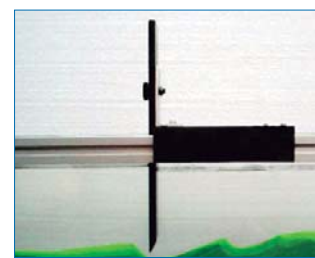
CFPLRC. Artificial roughened bed (3 different models)



CFTVCC. Venturi tube, with pressure transducers, converter and differential pressure digital indicator for input flow measurement



CFGOC. Wave generator



CFPRC. Adjustable undershot weir

With this unit there are several options and possibilities:

- Main items: 1, 2, 3, 4, 5 and 6.
- Optional items: 7, 8, 9, 10, 11 and 12.

Let us describe first the main items (1 to 6):

**① CFC. Unit:**

Anodized aluminium structure and supports in painted steel.

Main metallic elements in stainless steel.

Channel of rectangular section with transparent walls, formed by methacrylate transparent sections.

There are several channel versions to chose:

- CFC80/2. Computer Controlled Flow Channel  
(section: 80 x 300 mm. (3.15 x 11.81 inches)),  
length: 2.5 m. (98.42 inches).
- CFC80/5. Computer Controlled Flow Channel  
(section: 80 x 300 mm. (3.15 x 11.81 inches)),  
length: 5 m. (196.85 inches).

The channel is assembled on supports, with a system to control the inclination of the channel. Channel slope: adjustable. Inlet tank (capacity: 38 litres), with stilling of flow and with drain valve.

Reception tank (capacity: 38 litres), with drain valve.

Flow control valve.

Pipes.

FME00/B. Basic Hydraulic Feed System:

Storage tank (capacity: 140 litres approx.).

Impulsion pump, with speed regulation (computer controlled):

Single-phase, 220V/50Hz or 110V/60Hz.

0.37 KW.

2800 r.p.m.

30-80 l./min. at 20.1-12.8m.

Safety switch ON/OFF.

Flowmeter.

Flow control valve.

Flow sensor.

Pressure sensors.

Displacement sensor.

Available a wide range of accessories.

The complete unit includes as well:

**Advanced Real-Time SCADA.**

**Open Control + Multicontrol + Real-Time Control.**

**Specialized EDIBON Control Software based on Labview.**

**National Instruments Data Acquisition board (250 KS/s , kilo samples per second).**

**Calibration exercises, which are included, teach the user how to calibrate a sensor and the importance of checking the accuracy of the sensors before taking measurements.**

**Projector and/or electronic whiteboard compatibility allows the unit to be explained and demonstrated to an entire class at one time.**

**Capable of doing applied research, real industrial simulation, training courses, etc.**

**Remote operation and control by the user and remote control for EDIBON technical support, are always included.**

**Totally safe, utilizing 4 safety systems (Mechanical, Electrical, Electronic & Software).**

**Designed and manufactured under several quality standards.**

**Optional CAL software helps the user perform calculations and comprehend the results.**

**This unit has been designed for future expansion and integration. A common expansion is the EDIBON Scada-Net (ESN) System which enables multiple students to simultaneously operate many units in a network.**



CFC. Unit

Available accessories: (not included in the minimum supply)

CFTPC. Pitot tube and manometer board.

CFRMC. Level gauge for measurement of the water height (hook and point gauge).

CFVDGC. Broad and thin crested weirs. (One broad weir and 2 thin weirs).

CFCVRC. Vertical flat gate and radial gate.

CFSDL. Syphon spillway.

CFPVPC. Dams spillway (3 different models) and flow splitters.

CFCAC. Culvert fitting.

CFVCC. Crump weir.

CFVENC. Venturi flume.

CFSDSC. Air regulated syphon.

CFFSC. False floor sections. (2 different models).

CFPLRC. Artificial roughened bed. (3 different models).

CFTVCC. Venturi tube, with pressure transducers, converter and differential pressure digital indicator for input flow measurement.

CFGOC. Wave generator.

CFPRC. Adjustable undershot weir.

② **CFC/CIB. Control Interface Box:**

The Control Interface Box is part of the SCADA system.

**Control interface box with process diagram in the front panel** and with the same distribution that the different elements located in the unit, for an easy understanding by the student.

All sensors, with their respective signals, are properly manipulated from -10V. to +10V. computer output. Sensors connectors in the interface have different pines numbers (from 2 to 16), to avoid connection errors.

Single cable between the control interface box and computer.

**The unit control elements are permanently computer controlled**, without necessity of changes or connections during the whole process test procedure.

**Simultaneous visualization in the computer of all parameters involved in the process.**

**Calibration of all sensors involved in the process.**

**Real time curves representation about system responses.**

Storage of all the process data and results in a file.

Graphic representation, in real time, of all the process/system responses.

**All the actuators' values can be changed at any time from the keyboard** allowing the analysis about curves and responses of the whole process.

All the actuators and sensors values and their responses are displayed on only one screen in the computer.

**Shield and filtered signals to avoid external interferences.**

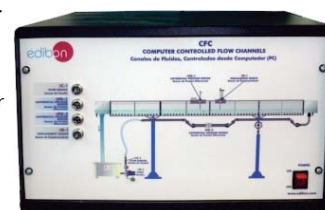
**Real time computer control with flexibility of modifications from the computer keyboard of the parameters, at any moment during the process.**

Real time computer control for pumps, compressors, resistances, control valves, etc.

**Real time computer control for parameters involved in the process simultaneously.**

**Open control** allowing modifications, at any moment and in real time, of parameters involved in the process simultaneously.

**Three safety levels, one mechanical in the unit, another electronic in the control interface and the third one in the control software.**



CFC/CIB

③ **DAB. Data Acquisition Board:**

The Data Acquisition board is part of the SCADA system.

PCI Data acquisition board (National Instruments) to be placed in a computer slot. Bus PCI.

**Analog input:**

Number of channels= 16 single-ended or 8 differential. Resolution= 16 bits, 1 in 65536.

**Sampling rate up to: 250 KS/s (kilo samples per second).**

Input range (V)=±10 V. Data transfers=DMA, interrupts, programmed I/O. DMA channels=6.

**Analog output:**

Number of channels=2. Resolution= 16 bits, 1 in 65536. Maximum output rate up to: 833 KS/s.

Output range(V)=±10 V. Data transfers=DMA, interrupts, programmed I/O.

**Digital Input/Output:**

Number of channels=24 inputs/outputs. D0 or DI Sample Clock frequency: 0 to 1 MHz.

Timing: Number of Counter/timers=2. Resolution: Counter/timers: 32 bits.



DAB

④ **CFC/CCSOF. Computer Control + Data Acquisition + Data Management Software:**

The three softwares are part of the SCADA system.

Compatible with actual Windows operating systems. Graphic and intuitive simulation of the process in screen. **Compatible with the industry standards.**

Registration and visualization of all process variables in an automatic and simultaneous way.

**Flexible, open and multicontrol software**, developed with actual windows graphic systems, acting simultaneously on all process parameters.

**Management, processing, comparison and storage of data.**

**Sampling velocity up to 250 KS/s (kilo samples per second).**

**Calibration system for the sensors involved in the process.**

**It allows the registration of the alarms state and the graphic representation in real time.**

Comparative analysis of the obtained data, after the process and modification of the conditions during the process.

**Open software**, allowing the teacher to modify texts, instructions. Teacher's and student's passwords to facilitate the teacher's control on the student, and allowing the access to different work levels.

**This unit allows the 30 students of the classroom to visualize simultaneously all the results and the manipulation of the unit, during the process, by using a projector or an electronic whiteboard.**



CFC/CCSOF

⑤ **Cables and Accessories**, for normal operation.

⑥ **Manuals:** This unit is supplied with 8 manuals: Required Services, Assembly and Installation, Interface and Control Software, Starting-up, Safety, Maintenance, Calibration & Practices Manuals.

\* References 1 to 6 are the main items: CFC + CFC/CIB + DAB + CFC/CCSOF + Cables and Accessories + Manuals are included in the minimum supply for enabling normal and full operation.

## EXERCISES AND PRACTICAL POSSIBILITIES TO BE DONE WITH MAIN ITEMS

- |  |  |
|--|--|
| <p>1.- Measurement of the water height and the velocity along the channel.</p> <p>2.- Measurement of the flow with weirs of thin wall.</p> <p>3.- Measurement of flow with changes in the channel section.</p> <p>4.- Measurement of flow using Venturi flume.</p> <p>5.- Control of the flow by gates.</p> <p>6.- Level control using syphons.</p> <p>7.- Flow on overflow dams.</p> <p>8.- Flow among the pillars of a bridge.</p> <p>9.- Connection of a channel to a culvert.</p> <p>10.- Characterization of the hydraulic jump.</p> <p>11.- Profiles of the water free surface.</p> <p>12.- Investigation of flow and supercritical flow states.</p> <p>13.- Measurement of water levels.</p> <p>14.- Discharge processes on an underwater weir.</p> <p>15.- Amount of energy in flows in open channels.</p> <p>16.- Function of a syphon weir.</p> <p>17.- Flow rate and drain coefficients of a syphon weir.</p> <p>18.- Pipe flows.</p> <p>19.- Comparison of overflow and syphon weirs.</p> <p>20.- Observation of the throw of the water.</p> <p>21.- Generation of different flow states by damming the down-stream water.</p> <p>22.- Observation of the flow under an undershot weir:<br/>-Observation of hydraulic motion on discharge.</p> <p>23.- Relationship between dam height and discharge.</p> <p>24.- Observation of discharges under a radial gate:<br/>-Observation of hydraulic motion on discharge.</p> <p>25.- Hydrostatic pressure on a weir.</p> <p>26.- Investigations on waves.</p> <p>27.- Behaviour of structures in rough sea.</p> | <p>28.- Applying and understanding Manning's formula.</p> <p>29.- Understanding sub- and super-critical flow.</p> <p>30.- Learning how to apply force-momentum and steady flow energy equations to simple flow situations.</p> <p>31.- Investigation of the transition from running to shooting flow.</p> <p>Additional practical possibilities to be done by the end customer:</p> <p>32.- Sensors calibration.</p> <p>33.- Filling of the Pitot tube.</p> <p>34.- Filling of the venturi meter with analog output.</p> <p>35.- Calculation of water flow.</p> <p>36.- Use of level gauge for measurement of the water height.</p> <p>Other possibilities to be done with this Unit:</p> <p>37.- Many students view results simultaneously.<br/>To view all results in real time in the classroom by means of a projector or an electronic whiteboard.</p> <p>38.- Open Control, Multicontrol and Real Time Control.<br/>This unit allows intrinsically and/or extrinsically to change the span, gains; proportional, integral, derivate parameters; etc, in real time.</p> <p>39.- The Computer Control System with SCADA allows a real industrial simulation.</p> <p>40.- This unit is totally safe as uses mechanical, electrical and electronic, and software safety devices.</p> <p>41.- This unit can be used for doing applied research.</p> <p>42.- This unit can be used for giving training courses to Industries even to other Technical Education Institutions.</p> <p>43.- Control of the CFC unit process through the control interface box without the computer.</p> <p>44.- Visualization of all the sensors values used in the CFC unit process.<br/>- By using PLC-PI additional 19 more exercises can be done.<br/>- Several other exercises can be done and designed by the user.</p> |
|--|--|

### REQUIRED SERVICES

- Electrical supply: 220V./50Hz or 110V./60Hz.
- Water supply and drainage.
- Computer (PC).

### DIMENSIONS & WEIGHTS

- |                        |  |
|------------------------|--|
| CFC80/2:               | -Dimensions: 3600x1000x1700 mm. approx.<br>(141.73 x 39.37 x 66.93 inches approx.) |
|                        | -Weight: 250 Kg. approx.<br>(551 pounds approx.)                                   |
| CFC80/5:               | -Dimensions: 6050x1000x1700 mm. approx.<br>(238.19 x 39.37 x 66.93 inches approx.) |
|                        | -Weight: 350 Kg. approx.<br>(771.6 pounds approx.)                                 |
| Control Interface Box: | -Dimensions: 490 x 330 x 310 mm. approx.<br>(19.29 x 13 x 12.20 inches approx.)    |
|                        | -Weight: 10 Kg. approx.<br>(22 pounds approx.)                                     |

### AVAILABLE ACCESSORIES

- CFTPC. Pitot tube and manometer board.
- CFRMC. Level gauge for measurement of the water height (hook and point gauge).
- CFVDGC. Broad and thin crested weirs. (One broad weir and 2 thin weirs).
- CFCVRC. Vertical flat gate and radial gate.
- CFS DLC. Syphon spillway.
- CFPVPC. Dams spillway (3 different models) and flow splitters.
- CFCAC. Culvert fitting.
- CFVCC. Crump weir.
- CFVENC. Venturi flume.
- CFS DSC. Air regulated syphon.
- CFFSC. False floor sections. (2 different models).
- CFPLRC. Artificial roughened bed. (3 different models).
- CFTVCC. Venturi tube, with pressure transducers, converter and differential pressure digital indicator for input flow measurement.
- CFGOC. Wave generator.
- CFPRC. Adjustable undershot weir.

## AVAILABLE VERSIONS

### Offered in this catalogue:

- CFC80/2. Computer Controlled Flow Channel (section: 80 x 300 mm), length: 2.5 m.
- CFC80/5. Computer Controlled Flow Channel (section: 80 x 300 mm), length: 5 m.

### Offered in other catalogues:

- CF80/2. Flow Channel (section: 80 x 300 mm), length: 2.5 m.
- CF80/5. Flow Channel (section: 80 x 300 mm), length: 5 m.
  
- CFGC300/5. Computer Controlled Flow Channel (section: 300 x 450 mm), length: 5 m.
- CFGC300/7. Computer Controlled Flow Channel (section: 300 x 450 mm), length: 7.5 m.
- CFGC300/10. Computer Controlled Flow Channel (section: 300 x 450 mm), length: 10 m.
- CFGC300/12. Computer Controlled Flow Channel (section: 300 x 450 mm), length: 12.5 m.
  
- CFG300/5. Flow Channel (section: 300 x 450 mm), length: 5 m.
- CFG300/7. Flow Channel (section: 300 x 450 mm), length: 7.5 m.
- CFG300/10. Flow Channel (section: 300 x 450 mm), length: 10 m.
- CFG300/12. Flow Channel (section: 300 x 450 mm), length: 12.5 m.

SCADA  
Main screen

- I Main software operation possibilities.
- II Sensors displays, real time values, and extra output parameters. Sensors: SPD=Differential pressure sensor. SC=Flow sensor. SD=Displacement sensor.
- III Actuators controls. Actuator: AB=Pump.
- IV Channel selection and other plot parameters.
- V Real time graphics displays.

Software for Sensors Calibration

By using a free of charge code, the teacher and the students can calibrate the unit.

The teacher can recover his/her own calibration by using the EDIBON code that we give free of charge.

## COMPLETE TECHNICAL SPECIFICATIONS (for optional items)

Additionally to the main items (1 to 6) described, we can offer, as optional, other items from 7 to 12.

All these items try to give more possibilities for:

- a) Industrial configuration. (PLC)
- b) Technical and Vocational Education configuration. (CAI and FSS)
- c) Higher Education and/or Technical and Vocational Education configuration. (CAI)
- d) Multipost Expansions options. (Mini ESN and ESN)

### a) Industrial configuration

#### ⑦ **PLC. Industrial Control using PLC** (it includes PLC-PI Module plus PLC-SOF Control Software):

##### **-PLC-PI. PLC Module:**

**Metallic box.**

**Circuit diagram in the module front panel.**

Front panel:

##### **Digital inputs(X) and Digital outputs (Y) block:**

**16 Digital inputs**, activated by switches and 16 LEDs for confirmation (red).

**14 Digital outputs** (through SCSI connector) with 14 LEDs for message (green).

##### **Analog inputs block:**

**16 Analog inputs** (-10 V. to + 10 V.) (through SCSI connector).

##### **Analog outputs block:**

**4 Analog outputs** (-10 V. to + 10 V.) (through SCSI connector).

##### **Touch screen:**

High visibility and multiple functions. Display of a highly visible status. Recipe function. Bar graph function. Flow display function. Alarm list.

Multi language function. True type fonts.

Back panel:

Power supply connector. Fuse 2A. RS-232 connector to PC. USB 2.0 connector to PC.

Inside:

Power supply outputs: 24 Vdc, 12 Vdc, -12 Vdc, 12 Vdc variable.

##### **Panasonic PLC:**

**High-speed scan of 0.32 µsec.** for a basic instruction.

**Program capacity of 32 Ksteps**, with a sufficient comment area.

Power supply input (100 to 240 V AC).

DC input: 16 (24 V DC).

Relay output: 14.

**High-speed counter.**

**Multi-point PID control.**

**Digital inputs/outputs and analog inputs/outputs Panasonic modules.**

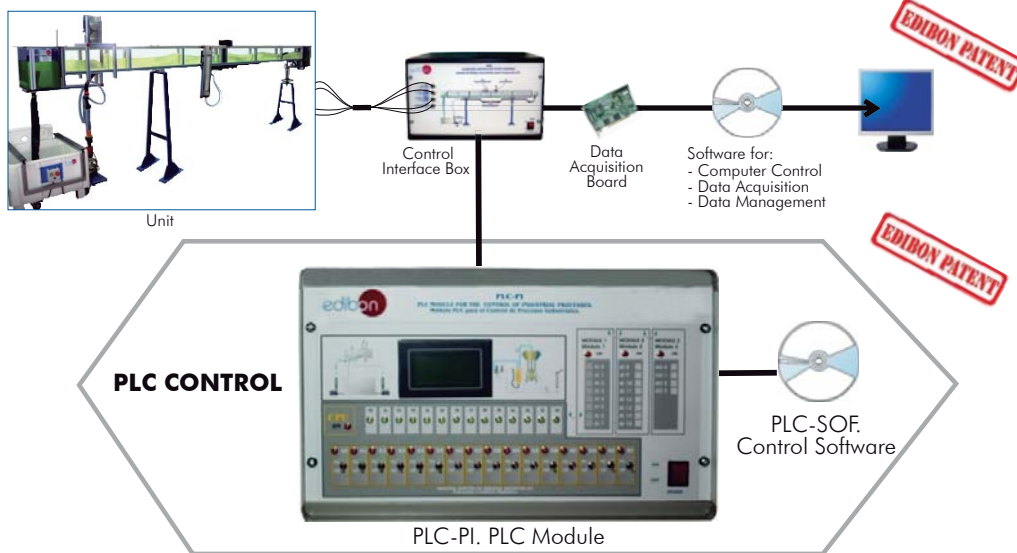
Communication RS232 wire to computer (PC).

Dimensions: 490 x 330 x 310 mm. approx. (19.29 x 13 x 12.20 inches approx.). Weight: 30 Kg. approx. (66 pounds approx.).

##### **-CFC/PLC-SOF. PLC Control Software:**

**For this particular unit, always included with PLC supply.**

The software has been designed using Labview and it follows the unit operation procedure and linked with the Control Interface Box used in the Computer Controlled Flow Channel (section: 80 x 300 mm.) (CFC).



#### **Practices to be done with PLC-PI:**

- 1.- Control of the CFC unit process through the control interface box without the computer.
- 2.- Visualization of all the sensors values used in the CFC unit process.
- 3.- Calibration of all sensors included in the CFC unit process.
- 4.- Hand on of all the actuators involved in the CFC unit process.
- 5.- Realization of different experiments, in automatic way, without having in front the unit. (This experiment can be decided previously).
- 6.- Simulation of outside actions, in the cases hardware elements do not exist. (Example: test of complementary tanks, complementary industrial environment to the process to be studied, etc).
- 7.- PLC hardware general use and manipulation.
- 8.- PLC process application for CFC unit.
- 9.- PLC structure.
- 10.- PLC inputs and outputs configuration.
- 11.- PLC configuration possibilities.
- 12.- PLC programming languages.
- 13.- PLC different programming standard languages.
- 14.- New configuration and development of new process.
- 15.- Hand on an established process.
- 16.- To visualize and see the results and to make comparisons with the CFC unit process.
- 17.- Possibility of creating new process in relation with the CFC unit.
- 18.- PLC Programming exercises.
- 19.- Own PLC applications in accordance with teacher and student requirements.

b) Technical and Vocational Education configuration

⑥ **CFC/CAI. Computer Aided Instruction Software System.**

This complete package includes two Softwares: the INS/SOF. Classroom Management Software (Instructor Software) and the CFC/SOF. Computer Aided Instruction Software (Student Software).

This software is optional and can be used additionally to items (1 to 6).

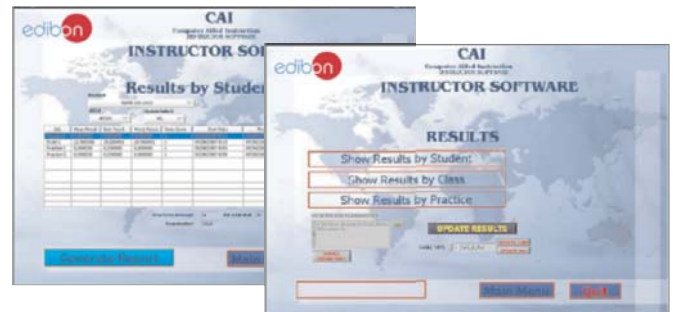
This complete package consists on an Instructor Software (INS/SOF) totally integrated with the Student Software (CFC/SOF). Both are interconnected so that the teacher knows at any moment what is the theoretical and practical knowledge of the students. These, on the other hand, get a virtual instructor who helps them to deal with all the information on the subject of study.

- INS/SOF. Classroom Management Software (Instructor Software):

The Instructor can:

- Organize Students by Classes and Groups.
- Create easily new entries or delete them.
- Create data bases with student information.
- Analyze results and make statistical comparisons.
- Print reports.
- Develop own examinations.
- Detect student's progress and difficulties.
- ...and many other facilities.

Instructor Software



- CFC/SOF. Computer Aided Instruction Software (Student Software):

It explains how to use the unit, run the experiments and what to do at any moment.

This Software contains:

- Theory.
- Exercises.
- Guided Practices.
- Exams.

Student Software



For more information see CAI catalogue. Click on the following link:

[www.edibon.com/products/catalogues/en/CAI.pdf](http://www.edibon.com/products/catalogues/en/CAI.pdf)

⑥ **CFC/FSS. Faults Simulation System.**

Faults Simulation System (FSS) is a Software package that simulates several faults in any EDIBON Computer Controlled Unit. It is useful for Technical and Vocational level.

The "FAULTS" mode consists on causing several faults in the unit normal operation. The student must find them and solve them.

There are several kinds of faults that can be grouped in the following sections:

Faults affecting the sensors measurement:

- An incorrect calibration is applied to them.
- Non-linearity.

Faults affecting the actuators:

- Actuators channels interchange at any time during the program execution.
- Response reduction of an actuator.

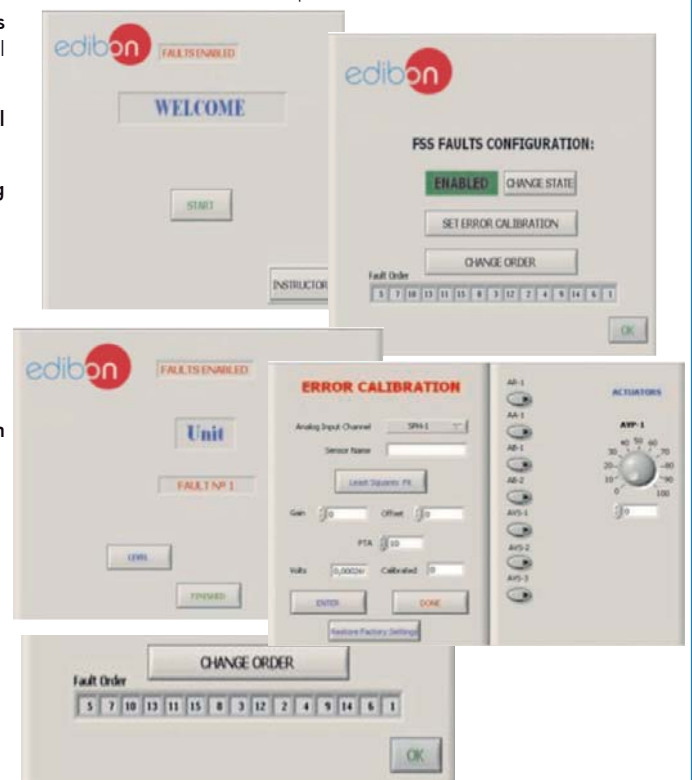
Faults in the controls execution:

- Inversion of the performance in ON/OFF controls.
- Reduction or increase of the calculated total response.
- The action of some controls is annulled.

On/off faults:

- Several on/off faults can be included.

Example of some screens



For more information see FSS catalogue. Click on the following link:

[www.edibon.com/products/catalogues/en/FSS.pdf](http://www.edibon.com/products/catalogues/en/FSS.pdf)

c) Higher Education and/or Technical and Vocational Education configuration

⑩ **CFC/CAL. Computer Aided Learning Software (Results Calculation and Analysis).**

This Computer Aided Learning Software (CAL) is a Windows based software, simple and very easy to use, specifically developed by EDIBON. It is very useful for Higher Education level.

CAL is a class assistant that helps in making the necessary calculations to extract the right conclusions from data obtained during the experimental practices.

CAL will perform the calculations.

CAL computes the value of all the variables involved.

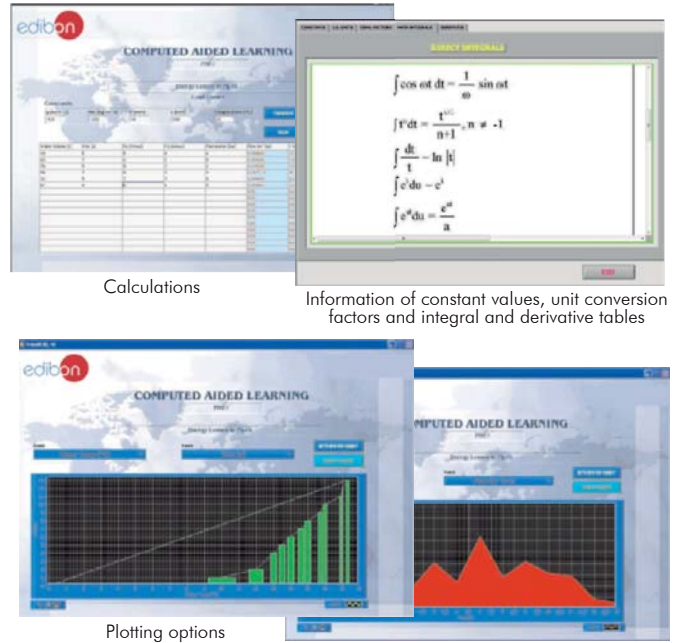
It allows to plot and print the results. Between the plotting options, any variable can be represented against any other.

Different plotting displays.

It has a wide range of information, such as constant values, unit conversion factors and integral and derivative tables.

For more information see CAL catalogue. Click on the following link:

[www.edibon.com/products/catalogues/en/CAL.pdf](http://www.edibon.com/products/catalogues/en/CAL.pdf)



d) Multipost Expansions options

⑪ **Mini ESN. EDIBON Mini Scada-Net System.**

Mini ESN. EDIBON Mini Scada-Net System allows up to 30 students to work with a Teaching Unit in any laboratory, simultaneously. It is useful for both, Higher Education and/or Technical and Vocational Education.

The Mini ESN system consists on the adaptation of any EDIBON Computer Controlled Unit with SCADA integrated in a local network.

This system allows to view/control the unit remotely, from any computer integrated in the local net (in the classroom), through the main computer connected to the unit. Then, the number of possible users who can work with the same unit is higher than in an usual way of working (usually only one).

Main characteristics:

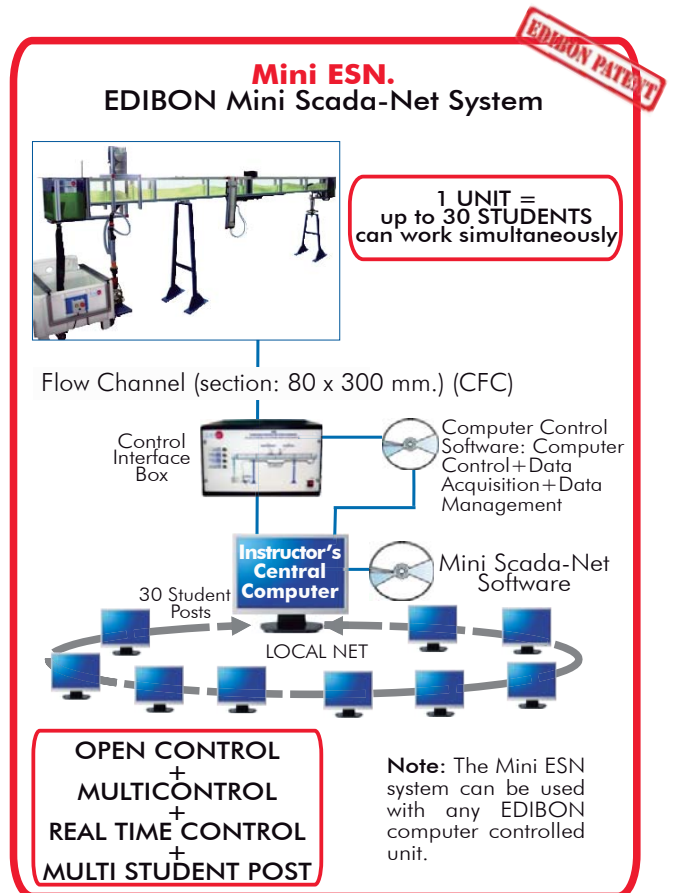
- It allows up to 30 students to work simultaneously with the EDIBON Computer Controlled Unit with SCADA, connected in a local net.
- Open Control + Multicontrol + Real Time Control + Multi Student Post.
- Instructor controls and explains to all students at the same time.
- Any user/student can work doing "real time" control/multicontrol and visualisation.
- Instructor can see in the computer what any user/ student is doing in the unit.
- Continuous communication between the instructor and all the users/ students connected.

Main advantages:

- It allows an easier and quicker understanding.
- This system allows you can save time and cost.
- Future expansions with more EDIBON Units.

For more information see Mini ESN catalogue. Click on the following link:

[www.edibon.com/products/catalogues/en/Mini-ESN.pdf](http://www.edibon.com/products/catalogues/en/Mini-ESN.pdf)



⑫ **ESN. EDIBON Scada-Net System.**

This unit can be integrated, in future, in a Complete Laboratory with many Units and many Students.

For more information see ESN catalogue. Click on the following link:

[www.edibon.com/products/catalogues/en/units/fluidmechanicsaerodynamics/esn-fluidmechanics/ESN-FLUID\\_MECHANICS.pdf](http://www.edibon.com/products/catalogues/en/units/fluidmechanicsaerodynamics/esn-fluidmechanics/ESN-FLUID_MECHANICS.pdf)

## ORDER INFORMATION

### **Main items** (always included in the supply)

Minimum supply always includes:

① **Unit: CFC. Computer Controlled Flow Channels (section: 80 x 300 mm.):**

Available versions to chose:

-CFC80/2. Computer Controlled Flow Channel (section: 80 x 300 mm), length: 2.5 m.

-CFC80/5. Computer Controlled Flow Channel (section: 80 x 300 mm), length: 5 m.

② **CFC/CIB. Control Interface Box.**

③ **DAB. Data Acquisition Board.**

④ **CFC/CCSOF. Computer Control + Data Acquisition + Data Management Software.**

⑤ **Cables and Accessories**, for normal operation.

⑥ **Manuals.**

\* IMPORTANT: Under CFC we always supply all the elements for immediate running as 1, 2, 3, 4, 5 and 6.

### **Optional items** (supplied under specific order)

#### a) Industrial configuration

⑦ PLC. Industrial Control using PLC (it includes PLC-PI Module plus PLC-SOF Control Software):

- PCL-PI. PLC Module.

- CFC/PLC-SOF. PLC Control Software.

#### b) Technical and Vocational configuration

⑧ CFC/CAI. Computer Aided Instruction Software System.

⑨ CFC/FSS. Faults Simulation System.

#### c) Higher Education and/or Technical and Vocational Education configuration

⑩ CFC/CAL. Computer Aided Learning Software (Results Calculation and Analysis).

#### d) Multipost Expansions options

⑪ Mini ESN. EDIBON Mini Scada-Net System.

⑫ ESN. EDIBON Scada-Net System.

**① CFC. Unit:**

Anodized aluminium structure and supports in painted steel.

Main metallic elements in stainless steel.

Channel of rectangular section with transparent walls, formed by methacrylate transparent sections.

There are several channel versions to chose:

-CFC80/2. Computer Controlled Flow Channel (section: 80 x 300 mm. (3.15 x 11.81 inches)), length: 2.5 m. (98.42 inches).

-CFC80/5. Computer Controlled Flow Channel (section: 80 x 300 mm. (3.15 x 11.81 inches)), length: 5 m. (196.85 inches).

The channel is assembled on supports, with a system to control the inclination of the channel. Channel slope: adjustable.

Inlet tank (capacity: 38 litres), with stilling of flow and with drain valve.

Reception tank (capacity: 38 litres), with drain valve.

Flow control valve.

Pipes.

FME00/B. Basic Hydraulic Feed System:

Storage tank (capacity: 140 litres approx).

Impulsion pump, with speed regulation (computer controlled):

Single-phase, 220V/50Hz or 110V/60Hz.

0,37 KW.

2800 r.p.m.

30-80 l./min. at 20.1-12.8m.

Safety switch ON/OFF.

Flowmeter.

Flow control valve.

Flow sensor.

Pressure sensors.

Displacement sensor.

Available a wide range of accessories.

The complete unit includes as well:

Advanced Real-Time SCADA.

Open Control + Multicontrol + Real-Time Control.

Specialized EDIBON Control Software based on Labview.

National Instruments Data Acquisition board (250 KS/s, kilo samples per second).

Calibration exercises, which are included, teach the user how to calibrate a sensor and the importance of checking the accuracy of the sensors before taking measurements.

Projector and/or electronic whiteboard compatibility allows the unit to be explained and demonstrated to an entire class at one time.

Capable of doing applied research, real industrial simulation, training courses, etc.

Remote operation and control by the user and remote control for EDIBON technical support, are always included.

Totally safe, utilizing 4 safety systems (Mechanical, Electrical, Electronic & Software).

Designed and manufactured under several quality standards.

Optional CAL software helps the user perform calculations and comprehend the results.

This unit has been designed for future expansion and integration. A common expansion is the EDIBON Scada-Net (ESN) System which enables multiple students to simultaneously operate many units in a network.

Available accessories: (not included in the minimum supply)

CFTPC. Pitot tube and manometer board.

CFRMC. Level gauge for measurement of the water height (hook and point gauge).

CFVDGC. Broad and thin crested weirs. (One broad weir and 2 thin weirs).`

CFCVRC. Vertical flat gate and radial gate.

CFSDL. Syphon spillway.

CFPVPC. Dams spillway (3 different models) and flow splitters.

CFCAC. Culvert fitting.

CFVCC. Crump weir.

CFVENC. Venturi flume.

CFSDSC. Air regulated syphon.

CFFSC. False floor sections. (2 different models).

CFPLRC. Artificial roughened bed. (3 different models).

CFTVCC. Venturi tube, with pressure transducers, converter and differential pressure digital indicator for input flow measurement.

CFGOC. Wave generator.

CFPRC. Adjustable undershot weir.

**② CFC/CIB. Control Interface Box:**

The Control Interface Box is part of the SCADA system. Control interface box with process diagram in the front panel.

The unit control elements are permanently computer controlled.

Simultaneous visualization in the computer of all parameters involved in the process.

Calibration of all sensors involved in the process.

Real time curves representation about system responses.

All the actuators' values can be changed at any time from the keyboard allowing the analysis about curves and responses of the whole process.

Shield and filtered signals to avoid external interferences.

Real time computer control with flexibility of modifications from the computer keyboard of the parameters, at any moment during the process.

Real time computer control for parameters involved in the process simultaneously.

Open control allowing modifications, at any moment and in real time, of parameters involved in the process simultaneously.

Three safety levels, one mechanical in the unit, another electronic in the control interface and the third one in the control software.

**③ DAB. Data Acquisition Board:**

The Data Acquisition board is part of the SCADA system.

PCI Data acquisition board (National Instruments) to be placed in a computer slot.

Analog input: Channels= 16 single-ended or 8 differential. Resolution= 16 bits, 1 in 65536. Sampling rate up to: 250 KS/s (kilo samples per second).

Analog output: Channels=2. Resolution= 16 bits, 1 in 65536.

Digital Input/Output: Channels=24 inputs/outputs.

**④ CFC/CSOF. Computer Control + Data Acquisition + Data Management Software:**

The three softwares are part of the SCADA system.

Compatible with the industry standards.

Flexible, open and multicontrol software, developed with actual windows graphic systems, acting simultaneously on all process parameters.

Management, processing, comparison and storage of data.

Sampling velocity up to 250 KS/s (kilo samples per second).

Calibration system for the sensors involved in the process.

It allows the registration of the alarms state and the graphic representation in real time.

Open software, allowing the teacher to modify texts, instructions. Teacher's and student's passwords to facilitate the teacher's control on the student, and allowing the access to different work levels.

This unit allows the 30 students of the classroom to visualize simultaneously all the results and the manipulation of the unit, during the process, by using a projector or an electronic whiteboard.

**⑤ Cables and Accessories**, for normal operation.

**⑥ Manuals:** This unit is supplied with 8 manuals: Required Services, Assembly and Installation, Interface and Control Software, Starting-up, Safety, Maintenance, Calibration & Practices Manuals.

**Exercises and Practical Possibilities to be done with Main Items**

- 1.- Measurement of the water height and the velocity along the channel.
  - 2.- Measurement of the flow with weirs of thin wall.
  - 3.- Measurement of flow with changes in the channel section.
  - 4.- Measurement of flow using Venturi flume.
  - 5.- Control of the flow by gates.
  - 6.- Level control using syphons.
  - 7.- Flow on overflow dams.
  - 8.- Flow among the pillars of a bridge.
  - 9.- Connection of a channel to a culvert.
  - 10.- Characterization of the hydraulic jump.
  - 11.- Profiles of the water free surface.
  - 12.- Investigation of flow and supercritical flow states.
  - 13.- Measurement of water levels.
  - 14.- Discharge processes on an underwater weir.
  - 15.- Amount of energy in flows in open channels.
  - 16.- Function of a syphon weir.
  - 17.- Flow rate and drain coefficients of a syphon weir.
  - 18.- Pipe flows.
  - 19.- Comparison of overflow and syphon weirs.
  - 20.- Observation of the throw of the water.
  - 21.- Generation of different flow states by damming the down-stream water.
  - 22.- Observation of the flow under an undershot weir:
    - Observation of hydraulic motion on discharge.
  - 23.- Relationship between dam height and discharge.
  - 24.- Observation of discharges under a radial gate:
    - Observation of hydraulic motion on discharge.
  - 25.- Hydrostatic pressure on a weir.
  - 26.- Investigations on waves.
  - 27.- Behaviour of structures in rough sea.
  - 28.- Applying and understanding Manning's formula.
  - 29.- Understanding sub- and super-critical flow.
  - 30.- Learning how to apply force-momentum and steady flow energy equations to simple flow situations.
  - 31.- Investigation of the transition from running to shooting flow.
- Additional practical possibilities to be done by the end customer:
- 32.- Sensors calibration.
  - 33.- Filling of the Pitot tube.
  - 34.- Filling of the venturi meter with analog output.
  - 35.- Calculation of water flow.
  - 36.- Use of level gauge for measurement of the water height.
- Other possibilities to be done with this Unit:
- 37.- Many students view results simultaneously.
    - To view all results in real time in the classroom by means of a projector or an electronic whiteboard.
  - 38.- Open Control, Multicontrol and Real Time Control.
    - This unit allows intrinsically and/or extrinsically to change the span, gains; proportional, integral, derivate parameters; etc, in real time.
  - 39.- The Computer Control System with SCADA allows a real industrial simulation.
  - 40.- This unit is totally safe as uses mechanical, electrical and electronic, and software safety devices.
  - 41.- This unit can be used for doing applied research.
  - 42.- This unit can be used for giving training courses to Industries even to other Technical Education Institutions.
  - 43.- Control of the CFC unit process through the control interface box without the computer.
  - 44.- Visualization of all the sensors values used in the CFC unit process.
- By using PLC-PI additional 19 more exercises can be done.  
- Several other exercises can be done and designed by the user.

a) Industrial configuration

⑦ **PLC. Industrial Control using PLC** (it includes PLC-PI Module plus PLC-SOF Control Software):

**-PLC-PI. PLC Module:**

Metallic box.  
 Circuit diagram in the module front panel.  
 Digital inputs(X) and Digital outputs (Y) block: 16 Digital inputs. 14 Digital outputs.  
 Analog inputs block: 16 Analog inputs.  
 Analog outputs block: 4 Analog outputs.  
 Touch screen.  
 Panasonic PLC:

High-speed scan of 0.32 μsec. Program capacity of 32 Ksteps. High-speed counter. Multi-point PID control.  
 Digital inputs/outputs and analog inputs/outputs Panasonic modules.

**-CFC/PLC-SOF. PLC Control Software:**

For this particular unit, always included with PLC supply.

**Practices to be done with PLC-PI:**

- 1.- Control of the CFC unit process through the control interface box without the computer.
- 2.- Visualization of all the sensors values used in the CFC unit process.
- 3.- Calibration of all sensors included in the CFC unit process.
- 4.- Hand on of all the actuators involved in the CFC unit process.
- 5.- Realization of different experiments, in automatic way, without having in front the unit. (This experiment can be decided previously).
- 6.- Simulation of outside actions, in the cases hardware elements do not exist. (Example: test of complementary tanks, complementary industrial environment to the process to be studied, etc).
- 7.- PLC hardware general use and manipulation.
- 8.- PLC process application for CFC unit.
- 9.- PLC structure.
- 10.- PLC inputs and outputs configuration.
- 11.- PLC configuration possibilities.
- 12.- PLC programming languages.
- 13.- PLC different programming standard languages.
- 14.- New configuration and development of new process.
- 15.- Hand on an established process.
- 16.- To visualize and see the results and to make comparisons with the CFC unit process.
- 17.- Possibility of creating new process in relation with the CFC unit.
- 18.- PLC Programming exercises.
- 19.- Own PLC applications in accordance with teacher and student requirements.

b) Technical and Vocational Education configuration

⑧ **CFC/CAI. Computer Aided Instruction Software System.**

This complete package consists on an Instructor Software (INS/ SOF) totally integrated with the Student Software (CFC/SOF).

-INS/SOF. Classroom Management Software (Instructor Software):

The Instructor can:

- Organize Students by Classes and Groups.
- Create easily new entries or delete them.
- Create data bases with student information.
- Analyze results and make statistical comparisons.
- Print reports.
- Develop own examinations.
- Detect student's progress and difficulties.

-CFC/SOF. Computer Aided Instruction Software (Student Software):

It explains how to use the unit, run the experiments and what to do at any moment.

This Software contains:

- Theory.
- Exercises.
- Guided Practices.
- Exams.

⑨ **CFC/FSS. Faults Simulation System.**

Faults Simulation System (FSS) is a Software package that simulates several faults in any EDIBON Computer Controlled Unit.

The "FAULTS" mode consists on causing several faults in the unit normal operation. The student must find them and solve them.

There are several kinds of faults that can be grouped in the following sections:

Faults affecting the sensors measurement:

- An incorrect calibration is applied to them.
- Non-linearity.

Faults affecting the actuators:

- Actuators channels interchange at any time during the program execution.
- Response reduction of an actuator.

Faults in the controls execution:

- Inversion of the performance in ON/OFF controls.
- Reduction or increase of the calculated total response.
- The action of some controls is annulled.

On/off faults:

- Several on/off faults can be included.

c) Higher Education and/or Technical and Vocational Education configuration

⑩ **CFC/CAL. Computer Aided Learning Software (Results Calculation and Analysis).**

This Computer Aided Learning Software (CAL) is a Windows based software, simple and very easy to use.  
CAL is a class assistant that helps in making the necessary calculations to extract the right conclusions from data obtained during the experimental practices.  
CAL will perform the calculations.  
CAL computes the value of all the variables involved.  
It allows to plot and print the results. Between the plotting options, any variable can be represented against any other.  
Different plotting displays.  
It has a wide range of information, such as constant values, unit conversion factors and integral and derivative tables.

d) Multipost Expansions options

⑪ **Mini ESN. EDIBON Mini Scada-Net System.**

EDIBON Mini Scada-Net System allows up to 30 students to work with a Teaching Unit in any laboratory, simultaneously.  
The Mini ESN system consists on the adaptation of any EDIBON Computer Controlled Unit with SCADA integrated in a local network.  
This system allows to view/control the unit remotely, from any computer integrated in the local net (in the classroom), through the main computer connected to the unit.

Main characteristics:

- It allows up to 30 students to work simultaneously with the EDIBON Computer Controlled Unit with SCADA, connected in a local net.
- Open Control + Multicontrol + Real Time Control + Multi Student Post.
- Instructor controls and explains to all students at the same time.
- Any user/student can work doing "real time" control/multicontrol and visualisation.
- Instructor can see in the computer what any user/student is doing in the unit.
- Continuous communication between the instructor and all the users/students connected.

Main advantages:

- It allows an easier and quicker understanding.
- This system allows you can save time and cost.
- Future expansions with more EDIBON Units.

The system basically will consist of:

This system is used with a Computer Controlled Unit.

- Instructor's computer.
- Students' computers.
- Local Network.
- Unit- Control Interface adaptation.
- Unit Software adaptation.
- Webcam.
- Mini ESN Software to control the whole system.
- Cables and accessories required for a normal operation.

\*Specifications subject to change without previous notice, due to the convenience of improvements of the product.



C/ Del Agua, 14. Polígono Industrial San José de Valderas.  
28918 LEGANÉS. (Madrid). SPAIN.  
Phone: 34-91-6199363 FAX: 34-91-6198647  
E-mail: edibon@edibon.com WEB site: [www.edibon.com](http://www.edibon.com)

Issue: ED01/13  
Date: August/2013

REPRESENTATIVE: